

Protecting your health

Why Weller Filtration Systems?

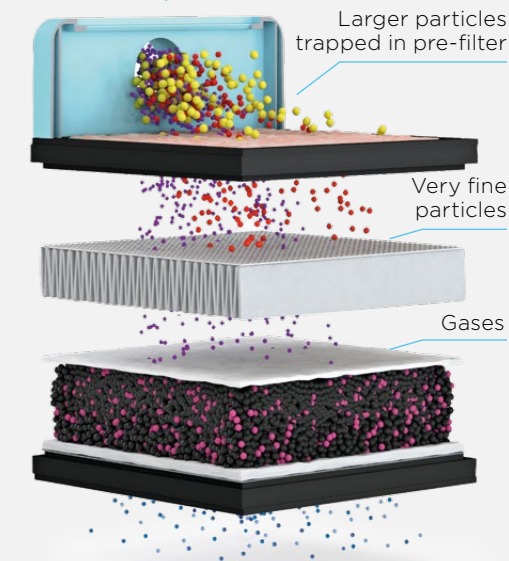
Proper fume extraction systems are essential to reduce exposure to hazardous substances like lead and flux vapors, ensuring a safer environment. Our Weller ZeroSmog fume extraction units are designed for both, intermittent and continuous, all-day use, provide optimal protection for both operators and the environment.



- Health protection
- Effective air purification
- Low noise level
- Quick & easy installation
- Mobile devices
- Large filter surface for long lifetime
- Low energy consumption

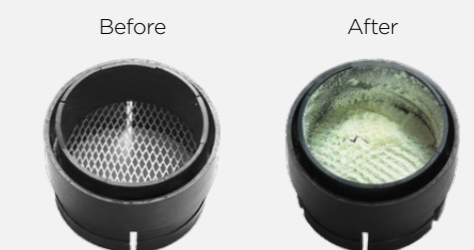
| Filter | Details | Fume Extraction Unit | Shield Pro | WE1010 Shield Kit | Guard Light | Guard | Guard 2 | EL | TL | 4V | LL200V | 6V | LL400V | MG140 | LL150 | MG100 | MG130 |
|---------------------------|---|---|---------------|-------------------|-------------|------------|------------|-------------|-------------|--------------|-------------|--------------|-------------|----------------|---------|-----------------|-----------------|
| | | Order Number/ 120V | FT9100299 | WE100NAS | FT91020299 | FT91021299 | FT91022299 | ZEROSMOGELN | ZEROSMOGLIN | T0053660299N | | T0053660299N | FT91002299 | U-45-1000-ESDN | | U-100-1000-ESDN | U-130-1000-ESDN |
| | | Order Number/ 230V | | T005329891 | FT91020699 | FT91021699 | FT91022699 | FT9100699N | FT9101699N | T0053660699N | FT91001699N | T0053660699N | FT91002699N | 145-1000-ESDN | FF-L15N | 100-1000-ESDN | 130-1000-ESDN |
| Main Filter | Particle Filter EPA E10 and AC foam for gases for ZeroSmog Shield | "Particle: EPA E10, Gas: Activated Carbon Foam" | FT91000046 | ✓ | ✓ | | | | | | | | | | | | |
| Main Filter | Particle Filter EPA E10 and AC granules for gases for ZeroSmog Shield Pro | "Particle: EPA E10, Gas: Activated Carbon Granules" | FT91000047 | ✓ | ✓ | | | | | | | | | | | | |
| "Filter & Pre-filter set" | Standard Filter Set ZeroSmog Guard | "Pre-filter: ePM1-70% (F8) Particle: HEPA H13, Gas: Activated Carbon Granules" | FT91000048 | | | ✓ | ✓ | ✓ | | | | | | | | | |
| "Filter & Pre-filter set" | Wide band Gas Filter Set ZeroSmog Guard | "Pre-filter: ePM1-70% (F8); Particle: HEPA H13, Gas: Activated Carbon & KMnO4 Granules" | FT91000049 | | | ✓ | ✓ | ✓ | | | | | | | | | |
| "Filter & Pre-filter set" | Adhesives Filter Set ZeroSmog Guard | "Pre-filter: ePM1-70% (F8); Particle: None, Gas: Activated Carbon & KMnO4 Granules" | FT91000051 | | | ✓ | ✓ | ✓ | | | | | | | | | |
| Main Filter | Main Filter for ZeroSmog 4V, EL and TL (also WFE 2S) | "Particle: HEPA H13, Gas: Activated Carbon & KMnO4 Granules" | T0058735936N | | | | | ✓ | ✓ | ✓ | | | | | | | |
| Main Filter | Wide band Gas Filter for Adhesive Fumes For Zero Smog 4V, EL and TL (also WFE 2S) | "Particle: None, Gas: Activated Carbon & KMnO4 Granules" | T0058735895N | | | | | ✓ | ✓ | ✓ | | | | | | | |
| Main Filter | Main Filter for WFE4S, WFE20D, ZeroSmog 6V, ZeroSmog 20T | "Particle: HEPA H13, Gas: Activated Carbon & KMnO4 Granules" | T0058735838 | | | | | | | | | ✓ | ✓ | | | | |
| Main Filter | Wide band Gas Filter for Adhesive Fumes for Zero Smog 6V | "Particle: None, Gas: Activated Carbon & KMnO4 Granules" | T0058735835 | | | | | | | | | ✓ | | | | | |
| Main Filter | Main Filter ZeroSmog 6V / Cleanroom | "Particle: HEPA H13, Gas: Activated Carbon & KMnO4 Granules" | FT91000019 | | | | | | | | | ✓ | | | | | |
| Main Filter | Main filter for Laser Line 150 and Laser Line 200 V | "Particle: HEPA H13, Gas: Activated Carbon & KMnO4 Granules" | FT91000008N | | | | | | | | | ✓ | | ✓ | ✓ | | |
| Main Filter | Main Filter Laser Line 400V | "Particle: HEPA H13, Gas: Activated Carbon & KMnO4 Granules" | FT91000010 | | | | | | | | | ✓ | ✓ | | | | |
| Main Filter | Main Filter MG 100S Standard | "Particle: HEPA H13, Gas: Activated Carbon & KMnO4 Granules" | 100-2000-ESDN | | | | | | | | | | | | | | ✓ |
| Main Filter | Main Filter MG 100, WFE 2X Solvent | "Particle: HEPA H13, Gas: Activated Carbon Granules" | 100-2012-ESDN | | | | | | | | | | | | | | ✓ |
| Main Filter | Main Filter MEK for MG100s and WFE 2X | "Particle: HEPA H13, Gas: KMnO4 Granules" | 100-2003-ESDN | | | | | | | | | | | | | | ✓ |
| Main Filter | Clean Room Filter for MG 100S, WFE 2X | "Particle: HEPA H13, Gas: Activated Carbon & KMnO4 Granules" | 100-2002-ESDN | | | | | | | | | | | | | | ✓ |
| Main Filter | Main Filter MG 130 | "Particle: HEPA H13, Gas: Activated Carbon & KMnO4 Granules" | 130-2000-ESDN | | | | | | | | | | | | | | ✓ |
| Main Filter | Main Filter MG 140 | "Particle: HEPA H13, Gas: Activated Carbon & KMnO4 Granules" | 145-2000-ESDN | | | | | | | | | | | ✓ | | | |
| Main Filter | Main Filter MG 140 Solvent | "Particle: HEPA H13, Gas: Activated Carbon Granules" | 145-2012-ESDN | | | | | | | | | | | ✓ | | | |
| Main Filter | Main Filter MG 140 Clean Room | "Particle: HEPA H13, Gas: Activated Carbon & KMnO4 Granules" | 145-2002-ESDN | | | | | | | | | | | ✓ | | | |
| Main Filter | Main Filter MG 140 MEK | "Particle: HEPA H13, Gas: KMnO4 Granules" | 145-2003-ESDN | | | | | | | | | | | ✓ | | | |

Smoke distributed over the entire filter surface



Clean air is brought back into the working environment

Intelligent flow principle for best possible protection. A strong suction and a powerful blower, captures the smoke more effectively. This principle ensures cleaner air and effective odour removal.



The before/after effect on a small mesh shows the degree of pollution after 90 minutes of soldering.



Filter capabilities: Excellent: ●●● Good: ●● Low: ● No: ○

| Filter | Model | Contaminant | | | | | | | | | | | | | | | | | | | | | | | |
|-------------------------|---|--------------------------|--------------------|---|------------------------|----------------------------|--------------------------|---|------------------|------------------------------|-----------------------------|---|---|--|----------------|----------------------------------|--|-------------------------|--|--------------------------|-----------------|--------------------------|------------|--------------------------|------------|
| | | Dust Particles Fumes | Solder & Flux | Gases | | | | | | | | | | | | | Other Gases | | | | | | | | |
| | | | | VOC (Solvents, Adhesives, Surface cleaners, Fuels, Fragrances, Fuels) | | | | | | | | | | | Acid gases | | Inorganic gases | | Halogen gases | Ozone (O ₃) | Ammonia/ amines | Aerosolized acids/bases | Peroxides | Radicals/ reactive gases | Mercaptans |
| | | | | Aromatic hydrocarbons | Aliphatic hydrocarbons | Ketones | Esters | Alcohols | Aldehydes | Organic acids | Chlorinated hydrocarbons | Terpenes | Organic sulfides | Amines | Acid gases | Inorganic gases | Halogen gases | Ozone (O ₃) | Ammonia/ amines | Aerosolized acids/bases | Peroxides | Radicals/ reactive gases | Mercaptans | | |
| Order Number | Benzene, Toluene, Xylene (BTX) | Hexane, Pentane, Heptane | Acetone, MEK, MIBK | Ethyl acetate, Butyl acetate | Ethanol, Isopropanol | Formaldehyde, Acetaldehyde | Acetic acid, Formic acid | Dichloro-methane, Trichloroethylene (TCE) | Limonene, Pinene | Dimethyl sulfide, thioethers | Methylamine, Dimethyl-amine | HCl, SO ₂ , NO ₂ , HF, H ₂ S | NH ₃ , Cl ₂ , O ₃ , H ₂ S | Cl ₂ , Br ₂ , F ₂ | O ₃ | NH ₃ , trimethylamine | HNO ₃ , H ₂ SO ₄ droplets | MEKP, benzoyl peroxide | Cl ₂ , OH ⁻ (rare in air handling) | CH ₃ SH, etc. | | | | | |
| Main Filter | Particle Filter EPA E10 and AC foam for gases for ZeroSmog Shield | FT91000046 | ●● | ●● | ○ | ○ | ○ | ○ | ○ | ○ | ○ | ○ | ○ | ○ | ○ | ○ | ○ | ○ | ○ | ○ | ○ | ○ | | | |
| Main Filter | Particle Filter EPA E10 and AC granules for gases for ZeroSmog Shield Pro | FT91000047 | ●● | ●● | ○ | ○ | ○ | ○ | ○ | ○ | ○ | ○ | ○ | ○ | ○ | ○ | ○ | ○ | ○ | ○ | ○ | ○ | | | |
| Filter & Pre-filter set | Standard Filter Set ZeroSmog Guard | FT91000048 | ●●● | ●●● | ●●● | ●● | ●● | ●● | ●● | ● | ● | ●● | ●● | ● | ● | ● | ● | ● | ● | ● | ○ | ● | | | |
| Filter & Pre-filter set | Wide band Gas Filter Set ZeroSmog Guard | FT91000049 | ●●● | ●●● | ●● | ●● | ●● | ●● | ●● | ●● | ●● | ●● | ●● | ●● | ●● | ●● | ●● | ●● | ●● | ●● | ● | ○ | ● | | |
| Filter & Pre-filter set | Adhesives Filter Set ZeroSmog Guard | FT91000051 | ● | ●●● | ●● | ●● | ●● | ●● | ●● | ●● | ●● | ●● | ●● | ●● | ●● | ●● | ●● | ●● | ●● | ●● | ● | ○ | ●● | | |
| Main Filter | Main Filter for ZeroSmog 4V, EL and TL (also WFE 2S) | T0058735936N | ●●● | ●●● | ●● | ●● | ●● | ●● | ●● | ●● | ●● | ●● | ●● | ●● | ●● | ●● | ●● | ●● | ●● | ●● | ● | ○ | ●● | | |
| Main Filter | Wide band Gas Filter for Adhesive Fumes | T0058735895N | ○ | ●●● | ●● | ●● | ●● | ●● | ●● | ●● | ●● | ●● | ●● | ●● | ●● | ●● | ●● | ●● | ●● | ●● | ● | ○ | ●● | | |
| Main Filter | Main Filter for WFE4S, WFE20D, ZeroSmog 6V, ZeroSmog 20T | T0058735838 | ●●● | ●●● | ●● | ●● | ●● | ●● | ●● | ●● | ●● | ●● | ●● | ●● | ●● | ●● | ●● | ●● | ●● | ●● | ● | ○ | ●● | | |
| Main Filter | Wide band Gas Filter for Adhesive Fumes | T0058735835 | ○ | ●●● | ●● | ●● | ●● | ●● | ●● | ●● | ●● | ●● | ●● | ●● | ●● | ●● | ●● | ●● | ●● | ●● | ● | ○ | ●● | | |
| Main Filter | Main Filter ZeroSmog 6V / Cleanroom | FT91000019 | ●●● | ●●● | ●● | ●● | ●● | ●● | ●● | ●● | ●● | ●● | ●● | ●● | ●● | ●● | ●● | ●● | ●● | ●● | ● | ○ | ●● | | |
| Main Filter | Main filter for Laser Line 150 and Laser Line 200 V | FT91000008N | ●●● | ●●● | ●● | ●● | ●● | ●● | ●● | ●● | ●● | ●● | ●● | ●● | ●● | ●● | ●● | ●● | ●● | ●● | ● | ○ | ●● | | |
| Main Filter | Main Filter Laser Line 400V | FT91000010 | ●●● | ●●● | ●● | ●● | ●● | ●● | ●● | ●● | ●● | ●● | ●● | ●● | ●● | ●● | ●● | ●● | ●● | ●● | ● | ○ | ●● | | |
| Main Filter | Main Filter MG 100S Standard | 100-2000-ESDN | ●●● | ●●● | ●● | ●● | ●● | ●● | ●● | ●● | ●● | ●● | ●● | ●● | ●● | ●● | ●● | ●● | ●● | ●● | ● | ○ | ●● | | |
| Main Filter | Main Filter MG 100, WFE 2X Solvent | 100-2012-ESDN | ●●● | ●●● | ●●● | ●● | ●● | ●● | ●● | ● | ● | ●● | ●● | ● | ● | ● | ● | ● | ● | ● | ● | ○ | ● | | |
| Main Filter | Main Filter MEK for MG100s and WFE 2X | 100-2003-ESDN | ●●● | ● | ● | ● | ●● | ● | ● | ●● | ●● | ● | ● | ●● | ●● | ●●● | ●● | ●● | ●● | ●● | ● | ● | ●● | | |
| Main Filter | Clean Room Filter for MG 100S, WFE 2X | 100-2002-ESDN | ●●● | ●●● | ●● | ●● | ●● | ●● | ●● | ●● | ●● | ●● | ●● | ●● | ●● | ●● | ●● | ●● | ●● | ●● | ● | ○ | ●● | | |
| Main Filter | Main Filter MG 130 | 130-2000-ESDN | ●●● | ●●● | ●● | ●● | ●● | ●● | ●● | ●● | ●● | ●● | ●● | ●● | ●● | ●● | ●● | ●● | ●● | ●● | ● | ○ | ●● | | |
| Main Filter | Main Filter MG 140 | 145-2000-ESDN | ●●● | ●●● | ●● | ●● | ●● | ●● | ●● | ●● | ●● | ●● | ●● | ●● | ●● | ●● | ●● | ●● | ●● | ●● | ● | ○ | ●● | | |
| Main Filter | Main Filter MG 140 Solvent | 145-2012-ESDN | ●●● | ●●● | ●●● | ●● | ●● | ●● | ●● | ● | ● | ●● | ●● | ● | ● | ● | ● | ● | ● | ● | ● | ○ | ● | | |
| Main Filter | Main Filter MG 140 Clean Room | 145-2002-ESDN | ●●● | ●●● | ●● | ●● | ●● | ●● | ●● | ●● | ●● | ●● | ●● | ●● | ●● | ●● | ●● | ●● | ●● | ●● | ● | ○ | ●● | | |
| Main Filter | Main Filter MG 140 MEK | 145-2003-ESDN | ●●● | ● | ● | ● | ●● | ● | ● | ●● | ●● | ● | ● | ●● | ●● | ●●● | ●● | ●● | ●● | ●● | ● | ● | ●● | | |

